



# lincoln county MAGAZINE

## OFF-ROAD ISSUE

- + PEARSON FAMILY:  
OVER 50 YEARS  
OFF-ROAD RACING
- + COUNTY BECOMING  
CYCLING DESTINATION
- + PLUS MORE INSIDE!

David Pearson 2009 National Hare and Hound Race - Photo By KTM



Maggie Pearson at Hare and Hound  
- Photo by Mark Kariya

# 05

PEARSON  
FAMILY:  
*Over 50 Years  
of Off-Road  
Racing*

# 08

LINCOLN  
COUNTY  
POISED TO  
BECOME  
A CYCLING  
MECCA

# 11

RACING  
RECAP AND  
REMAINING  
EVENTS

# 13

OFF-ROADING  
EVENTS  
COMING TO  
THE FAIR



Lincoln County Magazine and Lincoln County Central are divisions of Battle Born Media, LLC, PO Box 485; Pioche, NV 89043.

Advertisers should contact Sales at (775) 962-2461. Demographic information available upon request. Circulation may vary.

Lincoln County Magazine is published four times per year. Special order single-copy price is \$7.50.

All contents ©2015 copyright, and reproduction of material appearing in *Lincoln County Magazine* and LCCentral.com is prohibited unless so authorized by the publishers. Publishers reserve the right to refuse service to any agency, individual, business, company or organization.

EDITORIAL SUBMISSIONS: Email all submissions to the attention of Ben Rowley - ben@nvcmedia.com.

*Lincoln County Magazine* assumes no responsibility for unsolicited materials.

DISCLAIMER: Editorial views expressed in this magazine are not necessarily those of the publishers.

**Publisher**  
Battle Born Media, LLC

**Managing Editor**  
Ben Rowley - ben@nvcmedia.com

**Advertising Sales**  
Ben Rowley - ben@nvcmedia.com  
(775) 962-2461

**Production**  
Rydan Banis

**Writers**  
Rose Lanigan

**Website/ Online Marketing**  
www.LCCentral.com  
ben@nvcmedia.com

**Address & Phone**  
PO Box 485 - Pioche, NV 89043  
(775) 725-3232

# PEARSON FAMILY: OVER 50 YEARS OF OFF-ROAD RACING



Axel Pearson 2012 National Hare and Hound Race - Photo By Floyds Race Photos

*By Rose Lanigan*

If you know anything about off-road racing in Southern Nevada, then you've heard of the Pearsons. The family has been racing for over 50 years. For two generations, they have made headlines with many victories and hard, competitive riding talents.

It all started with brothers Keith and Lee Pearson, who raced for over 15 years. Formerly from Las Vegas, the brothers have been doing construction most of their lives. However, in their spare time racing was their passion. When they weren't working, they were racing. Keith and Lee are both married and have lived in Lincoln County since around 1993. They own Pearson & Sons Construction in Panaca and run a family ranch in Camp Valley.

From those 15 years, Keith holds four MRAN championships and two Baja Class wins in the over 38 division. Lee holds two MRAN Champion-

ships in the over 30 division and two class wins in the Baja 1000.

Dave Pearson, Keith's son, remembers growing up watching and going to his dad's and uncle's races. "It started out

pretty natural, the dads buy their kids a bike and say, 'you wanna race?' And pretty soon you have six Pearson kids that all have bikes and all are racing."

Of his two brothers and three

## Jim Wilkin TRUCKING



For the past 40 years Jim Wilkin Trucking has been serving Southern and Central Nevada. We are proud of our accomplishments and dedicated employees.

Trucking | Crushing | Redi Mix Concrete | Contracting

1139 US Hwy 93  
P.O. Box 860  
Panaca, NV 89042  
(775) 728-4770 Office  
(775) 728-4773 Fax  
jwtrucking@yahoo.com



Pearson's Baja 1000 team from 2011 - Photo by Mark Kariya

sisters, Dave is the only one who went on to race professionally. His first race was at age 6 at the Pioche Grand Prix, PeeWee 50 cc in 1990. Twenty-five years later, Dave won his third second Overall Championship in the Baja 1000 in Mexico. "That may very well of been my last race as a professional," he said. "I have too many family obligations. I'm a coach for my kids T-ball team, and I'm tired of traveling. There were times when I had as many as 28 races a year."

Dave enjoys teaching at Dave Pearson's Riding Clinic held yearly at the Panaca Rodeo Grounds. He had a great turnout this year when 58 MRAN riders showed up to learn some of his expert views on the aspects of riding. "Body positions when cornering and going through whoops, sand and the importance of hydration and nutrition before and after racing" were a few of the things covered.

Besides Dave's three Baja 1000 wins, he also won a Hare & Hound Championship. "A Hare & Hound consists of two 45-mile loops in the desert," he said. "A rider starts out 15 min-

utes ahead of competitors and the object is to catch up with him."

"I've been lucky enough to race in New Zealand, Spain, France, Czech Republic and Brazil," Dave said. He won four out of five gold medals during these travels and was then chosen to be on the World Junior Trophy Team in New Zealand in 2006. He said of all the races, this was his favorite. The team consisted of four riders, under 23 years old, to race in The International Six Day Enduro Event. Dave and his team competed with 28 other countries and won the World Junior Trophy.

Dave is married to Sara Pearson and the couple owns a home in Caliente. They have

five children: Jessica, age 15, then Anthony, age 13, Titan, age 4, Oakley, age 2, and their latest addition Gavin who is 6 months old. So far none of his children are racing. "Not Yet," Dave said.

Dave has worked for Lincoln County Road Department for the past three years. However, he still helps out at the family business at Pearson & Sons Construction.

Lee Pearson, Dave's uncle, is also a resident of Lincoln County and has five children who race professionally. Maggie Pearson, Lee's 19-year-old daughter, races Hare & Hound and MRAN. She is currently serving an LDS mission in Billings, Montana and expects to continue racing after her mission. Her brother Tuffy Pearson, 20, has also won podiums at Hare & Hounds.

Russell Pearson, 35, also Dave's cousin, has won four Hare & Hound Championships, two Best in the Deserts and five Gold Medals. To achieve a gold medal you must be in the top 10 percent of your class. Russell and his brother Nick, 37, teamed together and won three MRAN Championships and three Best in the Desert. They too are busy raising families of

**Earthlings Welcome**  
 Your Hosts:  
**PAT & CODDIE**  
 HC 61 Box 45  
 Rachel, NV 89001  
 775-729-2515  
 fac 775-729-2251  
[www.littlealeinn.com](http://www.littlealeinn.com)  
[aliens@littlealeinn.com](mailto:aliens@littlealeinn.com)

Rachel, Nevada



Otto Peason - File Photo

there own,” said Lee.

All eyes are now on Axel Pearson, 21, a BETA rider who races professionally. Axel just won first place in the AA Premier Division during the Groundshakers race April 30 in Caliente. He also won Overall bike at the Parker 250 this year. Axel then placed first in the May pro event at the Sawmill Run in Panaca.

Axel’s next big event is coming up August 17-20. The 20th running of the iconic General Tire “Vegas To Reno” The Long Way. This is a 700-mile two-day event, the longest off-road race in the US. Race Day 1 will go from the start line near Alamo to Tonopah and Race Day 2 will go from Tonopah to Reno.



**Sheriff Kerry D. Lee**  
**Pioche Main Station, 225 Justice Way**  
**P.O. Box 570, Pioche, NV 89043**  
**Ph: 775-962-5151 | Fax: 775-962-5384**



Keep in Touch by downloading the free to use App, and get notifications and alerts from the Lincoln County Sheriff's Office

Published on:   

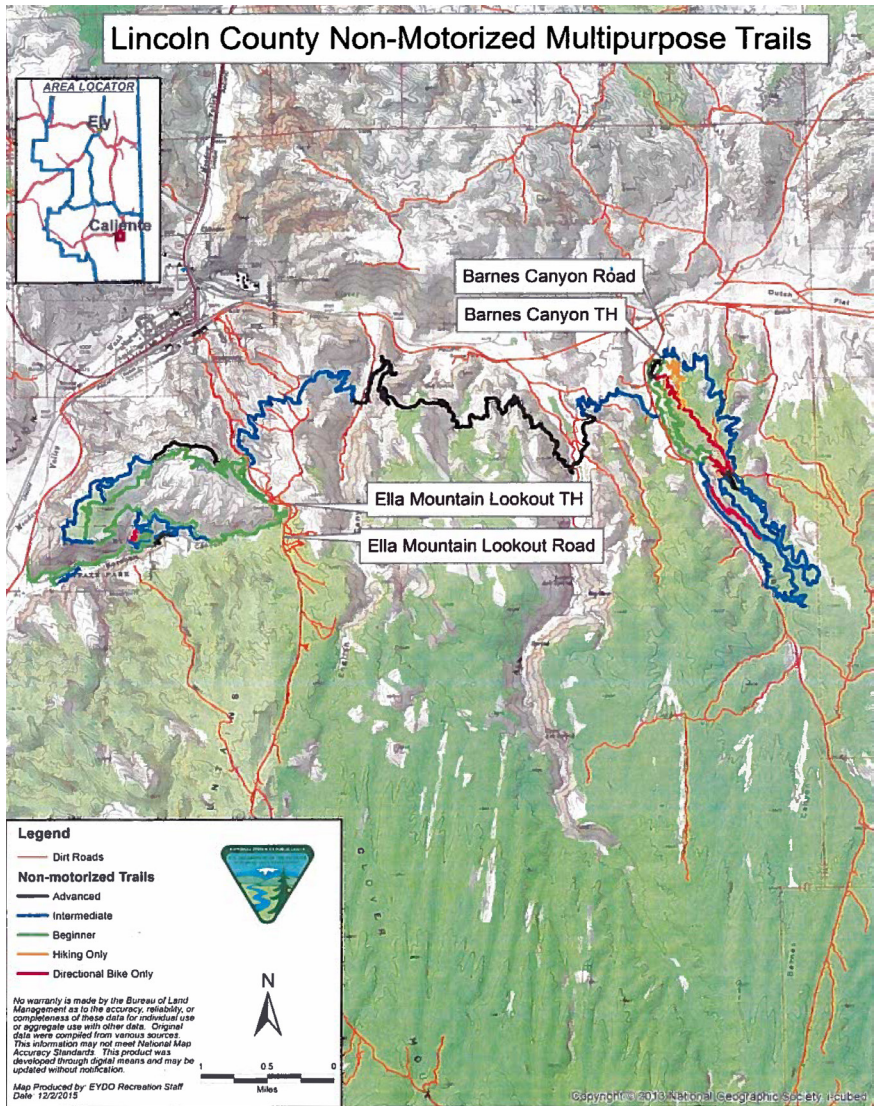
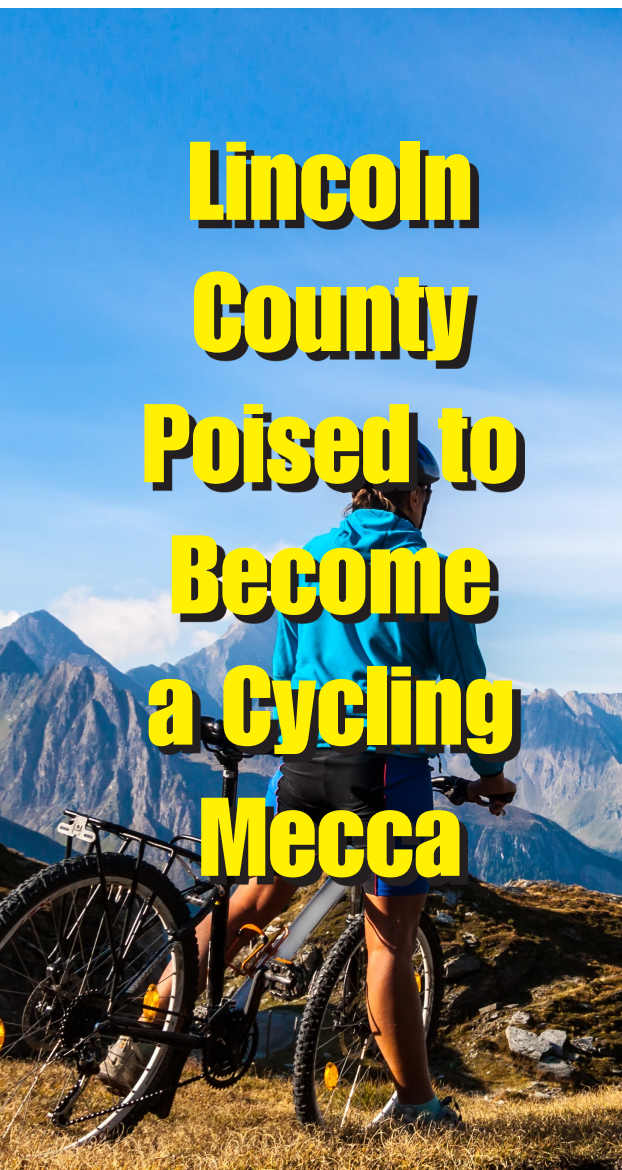
- **EMERGENCIES, Dial 9-1-1**
- **CODERED: Emergency Notification System**
- Register @ [www.lincolncountynv.org](http://www.lincolncountynv.org)
- **Follow us on Facebook:**  
**LINCOLN COUNTY SHERIFF'S OFFICE NEVADA**

**Registering your OHV is the law,  
and failure to do so could result in a fine.**

**For Instructions for OHV Registration Nevada Commission  
on Off-Highway Vehicles Head to the Website**

**[www.nvohv.com](http://www.nvohv.com)**

# Lincoln County Poised to Become a Cycling Mecca



Excitement in the bicycling community is growing for the 40-plus miles of mountain bike trails to be built around and in Caliente.

Recent articles in two popular biking magazines highlight the possibilities of a true, new mountain biking mecca being created in the county.

Earlier this year, *Bike Magazine* spoke with International Mountain Biking Association's Patrick Kell, director of IMBA's southwest region and a major player in planning the project. Kell hopes the 42 miles of trails are only the beginning. *Bike's*

article said Pioche is considered the site for the next phase of trails. Kell sees the possibility of 50 to 100 miles near the town "that would take riders up to Highland Peak - the highest

point in the area, at 9,400 hundred feet - through nearby Cathedral Gorge State Park and back to Caliente."

In the meantime, the funding for the first phase is secured.



## 8-Mile Well Service, LLC

**Bevan Lister**  
Owner/Operator -- Licensed & Bonded  
NV Contractor's Lic. #00076655

*Serving you and your water well needs.*

(775) 962-5541  
(775) 962-1283  
blister8@yahoo.com

P.O. Box 124  
Pioche NV 89043

The City of Caliente has a \$495,000 grant, the Bureau of Land Management was awarded \$1 million out of Southern Nevada Public Land Management Act funding and the Nevada State Parks will use \$250,000 already earmarked for trails. About 27 miles of will be built on BLM-managed land, 12 miles in Kershaw-Ryan State Park and 3.5 miles in Caliente.

A May article in *Cycling Utah* laid out the tentative timeframe for the project. The BLM “conducted a public comment pe-

riod on an environmental assessment in March. It hopes to begin construction this fall and open at least part of the network in the fall of 2017 or spring 2018. The timeline depends on weather and a few ongoing studies to make sure the trails do not interfere with migratory bird patterns and native plants.”

Both articles mentioned how the trails may give a major boost to tourism in the area, with opportunities for new businesses to be established that would cater to visiting cyclists.

But even as this project was unfolding, Lincoln’s bicycling reputation was already established with two annual events - showing riders are willing to come to the area for some adventure.

The Park to Park Pedal-Extreme Nevada 100 Bicycle Tour is prepping for its sixth annual event October 8, and the Beaver Dam Gravel Grinder just completed its third annual event

*continued on page 15*



# LINCOLN COUNTY FAIR AND RODEO

## FUN FOR THE WHOLE FAMILY!

### August 10th - 13th

## Lincoln County Fairgrounds - Panaca, Nevada

### EVENTS AND ACTIVITIES

Queen Contest  
Stock Dog Trials  
Ranch Rodeo  
Vendors  
Live Entertainment  
Jackpot Barrel Racing

Gymkhana  
Team Roping  
Zuccapult  
Pet Show  
Great Food  
Dances

Adventure Relay  
Jr. Rodeo  
Exhibits  
Kids Games  
Pee Wee Rodeo  
Mud Bog

### MORE INFO

Visit [www.LCNVFair.org](http://www.LCNVFair.org)

Like us on Facebook | [facebook.com/LCNVFair](https://facebook.com/LCNVFair)

(775) 962-2784 or (775) 962-2832

# Racing Recap and Remaining Events:

## Busy racing season in Lincoln County



*Fernie Padilla first overall Triumph in SNORE Race Fuel 250  
- Photo by Mike Henle*

It's been a busy season of off-road racing in Lincoln County, with more races scheduled this year.

Most recently, the Southern Nevada Off Road Enthusiasts held its Driven Experiences 250 in Caliente June 10-11. Caliente isn't new to SNORE, but it had been quite a while since the group put the city back on its schedule last year. The 2015 race was a success, so SNORE

came back for more.

Some 95 cars and their teams converged on Caliente, but what the field didn't anticipate was the rain that dominated the scenery a short time before the green flag was to drop.

Drivers are accustomed to dust, rocks and yes, the trees and the streams in Caliente, but the muddy conditions created by the heavy rains provided yet another unexpected bump in

the road in a sport known for its never-ending scenes of "uh oh" environments.

A young resident of Caliente won the Class 12 competition and you can bet that Colton Gubler has pictures in his mind of the jumps, the rocks and yes, the rain. A former desert motorcycle racer, the 21 year-old Gubler had the time of his life although he admitted that the race was a challenging endeavor.

"The rain started at about 4 in the morning," Gubler said. "It was coming down really hard."

Gubler said he drove smart and kept his head on his shoulders.

"You would wipe your lens and all of a sudden, there would be more mud on them. I had a little bit of an advantage because I live in Caliente. But you have to remember that we all had the same challenges."

Gubler said he had no troubles during the first three laps, but the final lap was nothing less than interesting.

"We started losing a motor and pretty much lost it all together at the end," he said. "Our final lap took 10 minutes longer than usual simply because there was nothing left of the engine."

Gubler said his radio malfunctioned right at the start of the race thanks to the rain presenting even bigger worries.

Motorcycle Racing Association of Nevada has also been active in Lincoln County, as usual. MRAN's Desert Series has included Yucca Chuckers at Pahroc Summit, Groudshakers in Caliente and Silver State Trailblazers in Panaca.

The next race will be another SSTB event, this time in Calien-



te, on August 27. Pre-race activities include a spaghetti dinner the night before the race at the Caliente Fire Hall. All proceeds will go to Lincoln County High School girls basketball program.

The race is part of a national championship series, with several rounds in four different states. The event will be motorcycle only, ranging from 50cc to 450cc engine sizes. There will be three different engine size bike races and three different mileages. The bikes will start at the Caliente Pepper Farm. The main pit area will be at the Caliente Industrial Park. Medical emergency service and radio communication will be provided.

Another MRAN race, Bushwackers, is scheduled for Piocche on September 17.

Local racers have represented well at the MRAN events, with many taking home top finishes

in their respective classes.


Best in the Desert is also active in Lincoln County. The group, along with Harden Off-Road, hosted the 32nd Annual Nevada "200" Trailride. This invitation only, non-competitive event, is the only 200-mile trailride in the United States. More than 150 die-hard off-roaders gathered from as far as Hawaii and Canada for event.

Best in the Desert is gearing up for the General Tire "Vegas To Reno" The Long Way Presented By FOX, August 17 to 20. The race will begin with the festivities starting in Las Vegas. McMillin Race Day 1 will go from the start line near Caliente to Tonopah and KC HiLites Race Day 2 will go from Tonopah to Reno.

Racing events have a significant impact on the county's economy and local officials have welcomed the organizations

over the years. The organizers have praised Lincoln County as a host. An example of this occurred at the June 16 Caliente City Council meeting, where Regan Gubler, a representative of SNORE, presented the City of Caliente with a plaque. "I can't begin to express how much we appreciate your generosity, continued support and dedication for every event we hold here in you city," Gubler said.

City officials expressed appreciation for SNORE's tremendous financial impact and donations made by the racing organization to the 4-H shooting, Caliente VFW and the Olson Senior Center.

*Excerpts from Lincoln County Record stories by Mike Henle, Rose Lanigan and Robert Sawicki were included in this article.* 

## Rainbow Canyon Motel

880 Front St., Caliente  
775.726.3291 or 726.3189

Satellite TV, Free Coffee, Big Flat Screen, WiFi, Plenty of Parking, Refrigerator

*Quick, Convenient access to everything you need, including:*

**Jerry's Sinclair Gas Station & J&J's Fast Food**



## J&J's Fastfood

- Burgers • Fries • Chicken • Shrimp •
- Shakes • Cones • Banana Splits •

Winter Hours

Open Sunday - Thursday, 10 am - 8 pm

Open Friday & Saturday, 10 am - 9 pm

"We make it when you order it!" Caliente, 775-726-3288

- Photo Courtesy Lincoln County Fair



## Off-Roading Events Coming to the Fair

The Lincoln County Fair & Rodeo is joining in on the off-roading fun with, not one, but two big events.

The annual fair, which will be August 11 to 13 in Panaca, will continue its established Jackpot Mud Bog event, which will be on the 13th, 3 p.m. Classes include stock, modified stock, unlimited and ATV. It is \$40 per vehicle and \$30 per ATV to enter.

New to this year's fair will be an ATV/Motorcycle rodeo. This will be on the 12th at 2 p.m. Events will include barrels, pole bending, flag race and keyhole race. Buckles for high point will be awarded to each age group. Cost to enter is \$25 per contestant. There will be two age groups: youth (12 and under) and adult (12 and up). Classes include 0-80, 85-125, open,

four-wheeler and side-by-side.

This is just part of three days full of exciting events and activities. The fair will have rodeos, live entertainment, great food, games, exhibits, dances, the Adventure Relay and more.

For more information, visit [LCNVFair.org](http://LCNVFair.org) or contact Jule Wadsworth at (775) 962-2784.



**Eagle Valley  
Resort**  
Stay a Day ~ Stay a Year

ATV Friendly - Fishing Licenses - Bait & Tackle  
Ice - Convenience Store - Lounge w/Free WiFi  
*Wheelchair accessible & handicap parking with 3 NEW Cabins!*

Full RV Hookups - Cabins - Satellite - Access to Trails  
**FISHING DERBIES IN AND MAY AND LABOR DAY**  
**CALL FOR DATES**

Call in to register any time - 775-962-5293  
Follow us on Facebook: Eagle Valley Resort  
Visit our website: [www.eaglevalleynv.com](http://www.eaglevalleynv.com)  
For reservations or more info: 775-962-5293  
13 miles down SR322 off US Hwy. 93 (by Pioche)



## The Alamo Inn

"Clean Comfortable Rooms, Cable TV, With ESPN, HBO, Phones, Wireless Internet Access. Best Value in town!"

**775-725-3371**

300 N. US Highway 93  
Alamo, NV 89001



### Tillie's Mini Mart & Wright's Country Cabins

Main St. - Pioche  
775.962.5205  
Sun. - Thurs. 6 am-8 pm  
Fri. - Sat. 6 am-9 pm



2 Queen beds \* A/C & Heat  
Free WiFi \* Cable TV  
Fully furnished kitchenette  
Restroom (shower, toilet & sink)  
Non-smoking rooms  
[www.wrightscountrycabins.com](http://www.wrightscountrycabins.com)



24 Hour Gas (Credit/Debit Card)  
Hunting/Fishing Licenses  
Ice \* Soda \* Beer \* Cigarettes  
Everything from Vaseline to Gasoline  
Call for Cabin Reservations

*continued from page 9*

in June.

The Park to Park is a street bicycle ride, where participants enjoy miles of scenic beauty as they ride along Highway 93. Riders pedal past the 1920s mission-style Depot in Caliente and through the historic mining town of Pioche. They tour through four of Nevada's state parks: Kershaw-Ryan, Cathedral Gorge, Spring Valley and Echo Canyon. And they take in the view of Meadow Valley as they coast down the hill from Pioche on their way back to Kershaw-Ryan for a Dutch oven feast.

The ride has won awards and rave reviews from participants, who now number over 200 each year. Event organizer Dawn Andone said after the 2014 ride, "All of the riders say the same, that the volunteers, the staff, and the community, always make them feel so welcome. It's just like a big family when they come up here." She added, "We are told year after year that this ride is the best supported of any ride they have ever done. The community and all the volunteers and staff make them feel so welcome."

Meanwhile, the just completed Beaver Dam Gravel Grinder had about 32 riders this year, which doubles what the event in 2015. This is a big-tire recreational ride through some of the mountain scenery of rural, eastern Nevada.

First timers Tim Olsen and Tina Findlay of Henderson said they came on this ride because

they enjoy camping, "and also put our sporting events around camping. We love mountain biking and saw this notice on Facebook and one of the local Las Vegas cycling websites and thought it would be perfect for us. It was fun, well organized and everyone was amazing."

Many of the hills on the 35-mile or 45-mile rides are very challenging, but Findlay said, "They were wonderful, every hill was fun. I like going up best. I'm not very good going downhill."

Gary Bocarde of Cedar City said he saw the notice of the Gravel Grinder in the *Cycling Utah* publication and it looked like it would be a fun thing. "It's a great event, but it's a grinder, too. Challenging, lots of steep hills, but a good, well run, well marked event. It was fun to meet new people during the ride."


At many places along the trail, large coolers were placed within easy reach for a rider to get a bottle of water and/or a snack and then move on.

Kathy Hunt and Sarah Somers of Panaca said it was a great

course, tough in places, but lots of fun. First timer Somers said it was "a good course, perfectly planned with really good support and well marked. I did it because I hadn't tried mountain biking before and I wanted to be supportive of the state parks."

Adam Woodrum, a lawyer from Las Vegas, said he and his family came because of interest and turned it into a camping trip for the family. "My mom, wife and two kids came, but they abandoned me today to go swimming at Kershaw-Ryan while I was on the ride. It was hard, but fun. A lot of straight up, straight down over and over again."

A light lunch was prepared for the riders at the old church/school house in Barclay and concluded with a barbeque, Dutch oven dinner later in the afternoon back at the starting point in Beaver Dam State Park.

People from Cedar City, Las Vegas and of course locals are looking at Lincoln County as a great place to ride. With the new trails and the word spreading, the area looks poised to be the next big bicycling destination. 



**Sunset View Inn**

1144 So. U.S. 93  
P.O. Box 570  
Alamo, NV 89001

Inn (775) 725-3336  
Res (775) 725-3843  
Fax (775) 725-3338

**FREE WI-FI!**

# BUSINESS DIRECTORY

1



43 S. 100 E., Suite 300  
St. George, UT 84770  
P: (435) 628-1711  
F: (435) 628-3318  
barney-mckenna.com

## ATTORNEYS BARNEY MCKENNA & OLMSTEAD

The ability to provide sophisticated legal services combined with our commitment to personalized and responsive service to each client sets Barney McKenna & Olmstead apart, not only as one of the leading law firms in Southern Utah and Southern Nevada, but also as a unique alternative in today's competitive legal market.

We recognize that our success depends on the satisfaction of our clients.

2



128 North Moapa Valley Boulevard  
Moapa, NV 89040  
P: (702) 397-2400  
W: www.tcautos.com

## AUTO DEALERS TOWN & COUNTRY AUTO

Town & Country Auto Sales has been offering great buys for over 30 years. We're the people other dealers don't want you to know about. Great cars for a fantastic price!

Drive though beautiful Moapa Valley 'til you arrive in Overton. We're right next to Washington Federal.

See our web site @ [www.tcautos.com](http://www.tcautos.com)  
Hope to see you soon!

3



93 NV-319  
Panca, NV 89042  
P: (775) 728-4461

## AUTO REPAIR McCROSKY'S Y SERVICES

Open 7 days a week, 5 am - 9 pm Pumps open 24 hours, with card. McCrosky's Y Services offers a Mini Store with liquor, and a garage that services body work, tires, batteries, and much more.

4



PO Box 807  
210 Front Street  
Caliente, NV 89008  
P: (775) 726-3135  
F: (775) 726-3134

## BANKS & CREDIT UNIONS NEVADA BANK & TRUST

A national bank rating and research firm gave Nevada Bank & Trust its highest rating (5 Stars) because of its "impressive capital levels," according to the bank's website, and "enviable loan portfolio with negligible levels of delinquent loans."

The bank provides personal and business savings and checking accounts, money market accounts, IRAs, as well as consumer, residential real estate, and commercial loans.

5



169 North Main St.  
P.O. Box 419  
Alamo, NV 89001  
P: (775) 725-3586  
F: (775) 725-3585  
[www.pvfcu.net](http://www.pvfcu.net)

## BANKS & CREDIT UNIONS PAHRANAGAT VALLEY FCU

PVFCU serves the Pahrnagat Valley area. Starting out on Dec. 5, 1958 in a resident's home, today it handles roughly \$18.5 million in assets.

Providing savings, checking, and loans, the credit union has grown substantially over the years and continues to add new services for its members.

6



PO Box 202  
Caliente NV 89001  
P: (877) 870-3003  
W: [www.lcatnv.net](http://www.lcatnv.net)

## COMMUNITY LINCOLN COMMUNITIES ACTION TEAM

LCAT is an organization of individuals who volunteer their time and talents to achieve the LCAT mission of Providing education and support so that individuals & organizations can grow and prosper.

LCAT provides education, event support and facilitates community awareness.

7



### CONSIGNMENT STORES TREASURE HUNTERS CLASSY CONSIGNMENTS

We are a consignment store dealing in antiques and collectibles and much more.

197 Clover St ste A  
Caliente, NV 89008  
P: (775) 726-3755  
Office Hours:  
8:00 am- 4:00 pm,  
Monday-Thursday

We sell from trusted vendors.

8



### CONSTRUCTION JIM WILKIN TRUCKING

For 40 years, Jim Wilkin Trucking has been serving Southern and Central Nevada. The company is one of Lincoln County's largest private employers.

1139 US 93  
Panaca, NV 89042  
P: (775) 728-4770  
F: (775) 728-4773  
Office Hours:  
8:00 am- 4:00 pm,  
Monday-Thursday

Our services include Crushing, General Contracting, Redi-mix Concrete and Trucking.



"The bitterness of poor quality lingers long... after the sweetness of low price"

9

### FEED STORES JOHNSON FEED

We are a small town feed dealer dedicated to service and quality. In addition to all types of Horse Hay and Cow Hay products we have a variety of Purina feed and grain and will do our best to accommodate your needs.

We have a 100% quality guarantee on all of our feed and hay products. We pride ourselves with a prompt livestock feed and hay delivery service right to your place or you can come to our home location and pick it up yourself.

HCR 61 Box 99  
Hiko, NV 89017  
P: (702) 994-6774  
W: [www.johnson-feedandhay.com](http://www.johnson-feedandhay.com)

10



### GROCERY STORES PANACA MARKET

Mon-Sat: 8:00 AM - 6:00 PM

1105 Main St  
Panaca, NV 89042  
P: (775) 728-4454  
F: (775)728-4305  
W: [panacamarket.com](http://panacamarket.com)

The Panaca Market is a full-service grocery store and is pleased to serve the residents of Panaca and the surrounding areas. The store offers a fresh meat shop, fresh produce, in-store bakery and dairy, grocery and household merchandise.

11



### HARDWARE STORES LOGAN SUPPLY

Jim and Jenny Logan have been filling a major community need for Pahrnatag Valley since 1978.

Logan Supply offers Pahrnatag Valley residents a local place to buy feed, fencing, nuts and bolts as well as electrical, plumbing, gardening, and welding supplies.

Jim & Jenny Logan  
1065 Curtis Canyon  
PO Box 329  
Alamo, NV 89001  
P: (775) 725-3368  
E: [logan@lcturbonet.com](mailto:logan@lcturbonet.com)

12



### INSURANCE DOLAN & EDWARDS FINANCIAL SERVICES

Navigating the complicated world of insurance alone can be an intimidating proposition. That's why many Lincoln County residents turn to Dolan & Edwards Financial Services in Caliente for assistance.

In business since 1972, Dolan & Edwards assists clients in all forms of insurance, including business, personal lines, health, and life. The company acts as the middleman, helping clients find insurance solutions that best fit their needs.

E: [michele@dolan-edwards.com](mailto:michele@dolan-edwards.com)  
P: (775) 726-3196  
F: (775) 726-3760  
160 Front Street  
PO Box 888  
Caliente, Nevada

13



### LODGING-ALAMO A COWBOY'S DREAM

We invite you to become a part of the history and the legacy of the Frias family. Your stay instills a new narrative.

A unique alternative to a Nevada retreat, our property is dedicated to the ultimate in exclusive luxury amenities.

A wide variety of sophisticated spaces are available to accommodate your stay.

95 Hand Me Down Road  
Alamo, Nevada  
P: (775) 725-3500  
W: cowboysdream.com

14



### LODGING-ALAMO WINDMILL RIDGE

Located on the scenic Great Basin Highway in the heart of the beautiful Pahrnagat Valley, Windmill Ridge Restaurant & Lodging offers serenity and comfort not equaled elsewhere. Come stay at one of our cozy cabins and savor delicious food from our restaurant and bakery.

Windmill Ridge Restaurant & Lodging is the perfect choice for a great meal and good night's sleep.

US Highway 93,  
Windmill Circle  
Alamo, Nevada  
P: (775) 725.3686  
W: wind-mill-ridge.com

15



### LODGING-RACHEL LITTLE A'LE'INN

The Little A'Le'Inn provides food, lodging, and a friendly staff to make your visit a pleasant one.

We have entertained visitors from all over the world. We love to meet new people and make new life friends as we have done over the many years.

We hope you are to be one of those new visitors and friends in the very near future.

HC61 Box 45  
Rachel, NV 89001  
P: (775)729-2515  
F: (775)729-2551  
W: littlealeinn.com

16



### LODGING-PANACA PINE TREE INN AND BAKERY

Come enjoy an elegant and casual Bed and Breakfast experience. Each of our 4 relaxing guest rooms has a distinctive character.

All rooms have private bathrooms and are handsomely furnished and decorated. Each morning a full hot breakfast is served in our beautiful dining room.

Features: High speed wireless internet, nice large flat screen TV with satellite in each room, and an open library.

412 North 3rd St.  
Panaca, NV 89042  
P: (775) 962-2495

17



### LODGING-CALIENTE SHADY MOTEL

Stay a while at our Caliente, Nevada motel and make this vacation your best one yet. Our family owned motel of almost 50 years will create the ideal atmosphere for you while you relax and get away from your day to day routine.

Whether you're just passing through Caliente, visiting a breathtaking Nevada State Park, or just getting away for the weekend, we have something for everyone.

450 Front St  
Caliente, NV 89008  
P: (775) 726-3106  
W: www.shadymotel.com

18



### LODGING-ALAMO THE ALAMO INN

The Alamo Inn is a family-owned and operated motel located in Alamo.

The motel strives to offer clean, comfortable rooms with a friendly and courteous staff to accommodate the many who visit Pahrnagat Valley. The Alamo Inn treats every customer like part of the family.

300 N. Highway 93  
Alamo, Nevada  
P: (888) 740-8009  
P: (775) 725-3371  
W: alamoinn-nevada.com



### OPTOMETRIST INVISION EYE CENTER

InVision has been providing Lincoln County residents with quality eye care since August 2010. Dr. Joshua Terry is an optometrist who does primary eye care and is Board Certified to treat and manage glaucoma in Nevada. He specializes in ocular disease.

InVision accepts most private medical insurances and vision plans, including Medicare and Nevada Medicaid. Discounts are available for cash-paying patients.

820 N. Spring St.,  
Ste. D  
Caliente, Nevada  
P: (775) 726-3911  
Wed. 9 to 7  
Thurs. 8 to 4



### PHARMACY MEADOW VALLEY PHARMACY

Meadow Valley Pharmacy provides many important medical services in Lincoln County.

The pharmacy currently offers supplies including nebulizers, wheelchairs, walkers, braces, and wraps. It also provides diabetic supplies, such as syringes, test strips, and monitors.

800 N. Spring St.  
Caliente, Nevada  
P: (775) 726-3771  
F: (775) 726-3685  
W: [www.mvpharmacy.com](http://www.mvpharmacy.com)



### RESORTS EAGLE VALLEY RESORT

Pat and John's EAGLE VALLEY RESORT is located 15 miles east of Pioche, NV. We are a haven for sports enthusiasts and a retreat for outings alike.

EAGLE VALLEY and it's surrounding areas offer the hunter and fisherman a year 'round playground teaming with the best nature has to offer.

12555 Resort Rd  
HC 74 Box 262-2  
Pioche, NV 89043  
P: (775) 962-5293  
W: [www.EagleValleyNV.com](http://www.EagleValleyNV.com)



### TUPPERWARE TUPPERWARE CONNECTION

Michelle Whipple sells high-quality Tupperware in Lincoln County. These cooking and storage containers come with a lifetime guarantee.

Products include water filtering pitchers and eco-friendly water bottles. There are items for children, organizational containers, and products for entertaining.

Michelle Whipple  
Hiko, Nevada  
P: (775) 725-3709



### WATER WELL SERVICES 8-MILE WELL SERVICES

Look to 8-Mile Well Service, LLC for all of your water well needs. Run by owner Bevan Lister, 8-Mile Well Service provides pumps, drop pipe, and accessories, as well as consulting services on well and pump design.

Contact 8-Mile Well Service today!

NV contractor #076655

Pioche, NV 89043  
P: (775) 962-1283



### PUBLICATIONS - PRINT LINCOLN COUNTY RECORD

Serving Lincoln County since 1870, the Lincoln County Record provides a weekly newspaper to the residents of Lincoln County and subscriptions to all over the country.

The paper strives to provide businesses with customized and affordable advertising needs.

For more information, contact the Lincoln County Record today.

209 Field Street  
Pioche, Nevada  
P: (775) 962-5522  
E: [contact.lcrecord@gmail.com](mailto:contact.lcrecord@gmail.com)  
W: [lccentral.com](http://lccentral.com)

**WEB DESIGN**

**GRAPHIC DESIGN**

**COMMUNICATIONS**

**MARKETING**

**LET US TELL YOUR STORY.  
COMMUNICATE YOUR MESSAGE WITH  
NEVADA CENTRAL MEDIA**



**NEVADA CENTRAL  
MEDIA**

[NVCMedia.com](http://NVCMedia.com) | 775.962.4261